

Exemys Web Server for Telemetry Applications



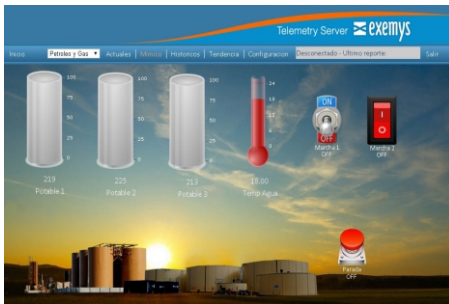
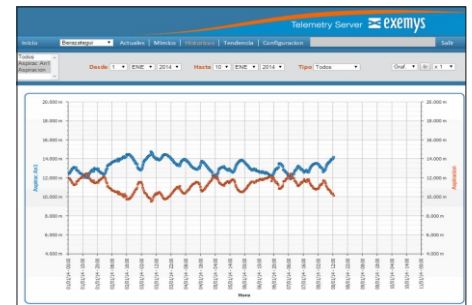
What is the Exemys Web Server?

The Exemys web server for telemetry applications is a PC-based application that provides a highly efficient service, allowing quick and accessible visualization of information from a variety of remote devices, including the GRD and cLAN, along with other connected devices. This system enhances the visualization, graphing, and logging of data from scattered sites and devices, using intuitive graphical tools that simplify and optimize information management.

Where is the information displayed?

The interface, which is fully customizable by the user, facilitates data interpretation and management through a variety of graphical tools such as gauges, progress bars, and indicators. This enables a clear and effective presentation of information on a web page tailored to the user's specific needs.

Application Examples



Advantages

Immediate implementation: The platform enables rapid deployment of telemetry applications, eliminating delays in integration and configuration.

Cost reduction: By using this service, there is no need to invest in dedicated servers, resulting in significant savings in infrastructure and maintenance costs.

Simplified access: All field devices are accessible through a single customizable web page, allowing centralized and direct management of information from anywhere.

Assured reliability: The service is hosted in a data center operating 24/7/365, ensuring high availability and constant data security.

Graphic Tools examples

